



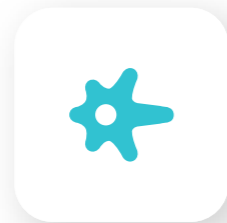
Healthcare professionals trust our portfolio of **solutions to diagnose and manage patients** with sleep, respiratory, cardiac, and neurological disorders.

Our platforms include:

- Direct-to-patient home sleep testing programs
- Sleep center management
- Neuro-diagnostic service offering
- A comprehensive SaaS platform for clinical data intervention, research, education, and patient management tools leading to improved outcomes



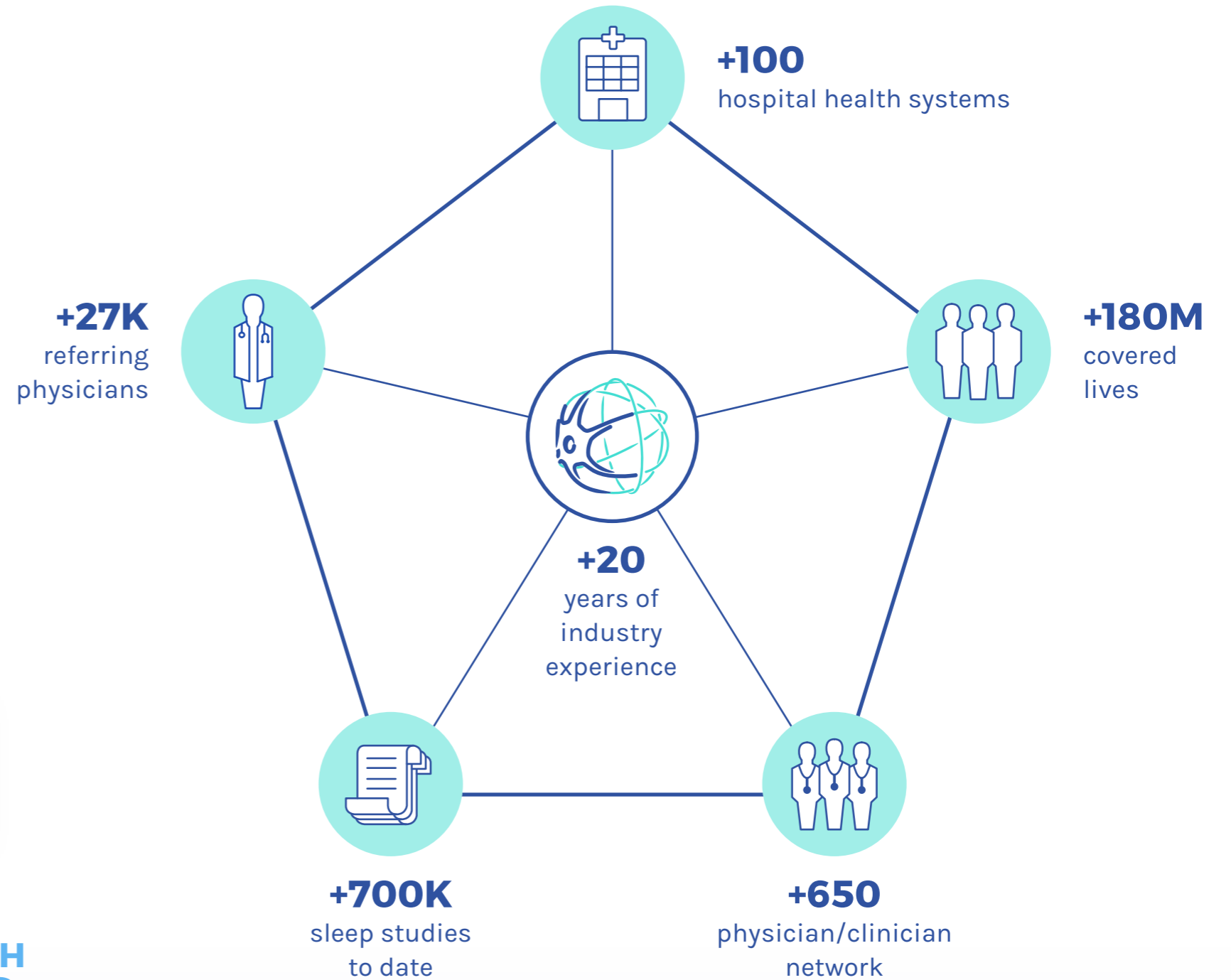
SLEEP SOLUTIONS



NEUROLOGY SOLUTIONS



TELEHEALTH SOLUTIONS



>70 MILLION AMERICANS SUFFER FROM A SLEEP DISORDER

EVOLVING

Increasing rate of **obesity** and **other chronic diseases** present a need for change and innovation.

MULTIDISCIPLINARY

Multiple aspects of medicine are influenced by sleep: **pulmonary, cardiology, endocrinology, pain management, psychology, neurology and rheumatology.**

A MAJOR HEALTHCARE CHALLENGE

The prevalence of **undiagnosed, untreated** patients with a sleep disorder continues to be a target for Risk Management Directors across all healthcare systems.

BIOSERENITY PROGRAM COMPONENTS

Establishing best practices in Sleep through experience sharing and collaboration:

	Management Resources, support, oversight	<ul style="list-style-type: none"> • Free hospital resources • Global leader in sleep and neuro-diagnostic testing
	Staff Licensed, credentialed staff	<ul style="list-style-type: none"> • Recruiting and retention expertise • Reduce hospital headcount by hiring on staff
	Equipment Procurement of acquisition systems	<ul style="list-style-type: none"> • Reduces capital spend for expansions, upgrades, etc.
	Patient Engagement Scheduling, authorization, registration	<ul style="list-style-type: none"> • Higher bed utilization • Improved profitability
	Supplies Disposable, single use testing supplies	<ul style="list-style-type: none"> • Purchasing power for sleep center specific supplies
	IT 24-7, 365 support and resources	<ul style="list-style-type: none"> • 100% HIPAA compliant • < 2% fail rate on 700k+ studies
	Telehealth Platform for patient consultation	<ul style="list-style-type: none"> • Virtual care for increased access

CREATING INTEGRATED SOLUTIONS TO IMPROVE CARE PATHWAYS AND PATIENT CARE**NAVIGATOR PROGRAM**

This program assists with identifying patients at risk for **Sleep Disordered Breathing (SDB)** via algorithms and screening devices.

Objectives

- ✓ Decrease sentinel events
- ✓ Reduce re-admissions
- ✓ Address post-operative complications

PATIENT ENGAGEMENT PROGRAMS

The increasing prevalence of chronic disease combined with the challenge of readmission penalties has healthcare systems seeking **new ways to better manage patients as they leave the hospital and transition to the home.**

BioSerenity's customer relationship management solution proactively generates visits and procedures by identifying patients with healthcare needs and then scheduling them for the appropriate visit or test.

Objectives

- ✓ Identify and reduce "Gaps in Care"
- ✓ Increase outpatient procedures
- ✓ Improve compliance and outcomes



DIRECT-TO-PATIENT HOME SLEEP DEVICE WITH 3 EASY-TO-APPLY SENSORS



24/7 Patient support



National availability



AASM and CDC guidelines compliant



Direct client access to patient demographics, stats, updates, and clinical reports



Device tracking and management

1 APPOINTMENT ON-BOARDING CALL
Share details about the process to patients

2 DEVICE DELIVERY MAILED TO PATIENTS
Delivered device offers instructions and live clinical support

3 TESTING UP TO 3 NIGHTS
Patient self-equips himself before going to sleep

4 DATA TRANSMISSION AT PATIENT HOME
Recorded data is transmitted from the device via cellular into the Cloud

5 DEVICE RETURN MAILED BACK TO BIOSERENITY
Pre-paid shipping

6 INTERPRETATION ONLINE (CLOUD-BASED PLATFORM)
A board of certified sleep specialists review and interpret the data

7 RESULTS ONLINE (CLOUD-BASED PLATFORM) OR FAX
Sent automatically to the referring Physician at time interpretation is completed



A SLEEP LAB MANAGEMENT CLOUD-BASED PLATFORM DESIGNED FOR HOSPITAL NETWORKS AND HEALTH SYSTEMS

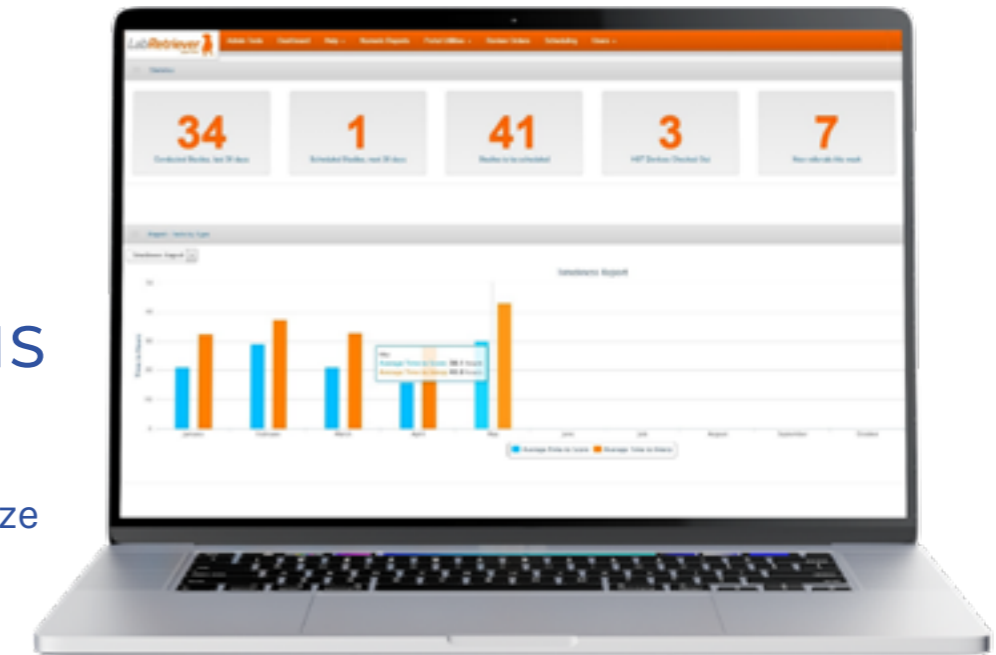
All the necessary tools needed to:



Facilitate every aspect of patient management care



Drive revenue and maximize the bottom line



SLEEP PROGRAM EMR

- ✓ EMR integrations with all major Hospital EMR platforms
- ✓ Multi-site scheduling
- ✓ Patient access to complete documentation
- ✓ Paperless (eDocuments) Forms, Questionnaires, Surveys, Digital signatures
- ✓ Enhanced communication tools
- ✓ Referring physician access to patient information

Streamlines intake process manages all patient data from one user-friendly page

LAB MANAGEMENT TOOLS

- ✓ Scheduling efficiency
- ✓ Referral tracking
- ✓ Scoring turnaround time
- ✓ Interpretation turnaround time
- ✓ Inventory management
- ✓ Volumes by study type
- ✓ Bed utilization
- ✓ Satisfaction surveys
- ✓ Remote “Look-Ins” to multiple locations

Tracks sleep center’s activity, in real time develops monthly metrics, reporting on performance of each staff member within the sleep center

SLEEP STUDY PROCESSING

- ✓ Study transfer and hosting
- ✓ Remote study review
- ✓ Clinical data import
- ✓ Email notifications
- ✓ Home Study workflow
- ✓ DME script ordering
- ✓ Import scoring results
- ✓ Digital signature process for interpreting physicians

Automated workflow for all sleep studies changing patient status as they move through the process from initial contact to clinical management

1 IN 26 PEOPLE WILL DEVELOP EPILEPSY OR RECURRENT SEIZURES DURING THEIR LIFETIME

BIO SERENITY IN NEUROLOGY | Providing diagnostic solutions to improve access to care in neurology

Our Diagnostic Equipment | a state of the art 32 channel EEG ambulatory device:



| Routine EEG & | Intermittently Monitored AEEG with Video

Our Workflow | a 3-step process to diagnosis:



1. Appointment scheduling

insurance verification

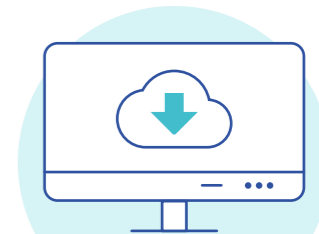
authorization



2. Clinical staff set-up

monitoring

disconnect



3. Cloud-based platform

- For physicians to access to data and perform Professional services
- Physician and Technologist remote look-in capabilities
- Persyst software

DIAGNOSIS

Epilepsy is most commonly diagnosed **prior to age 20** or **after age 65**, new cases increase after the age of 55 due to an increase of strokes, tumors and Alzheimer's disease. Due to the complexity of providing long term testing, many patients have limited access to care.

IMPACTED QUALITY OF LIFE

In addition to the direct effect of seizures, **those impacted may suffer** impaired cognition, loss of consciousness, falls, severe muscle contractions and other comorbidities including psychiatric disorders, cognitive disorders, migraine, and sleep disorders.

NON-EPILEPTIC SEIZURE (NES)

Up to **20% of people with epilepsy experience seizures (NES)**, which present similar to epileptic events but are not associated with the typical electrical discharges found in the brain during a seizure episode.



BIO SERENITY

Smart Healthcare Solutions

For additional information on BioSerenity's
Solutions, please contact: usinfo@bioserenity.com

| **Website** us.bioserenity.com

