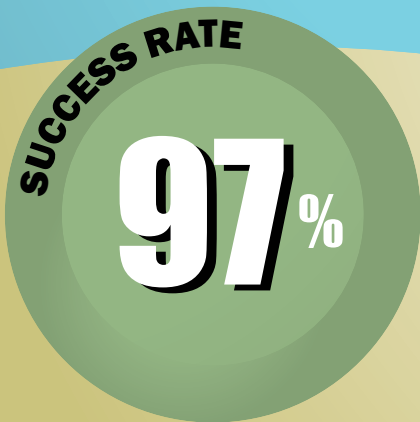
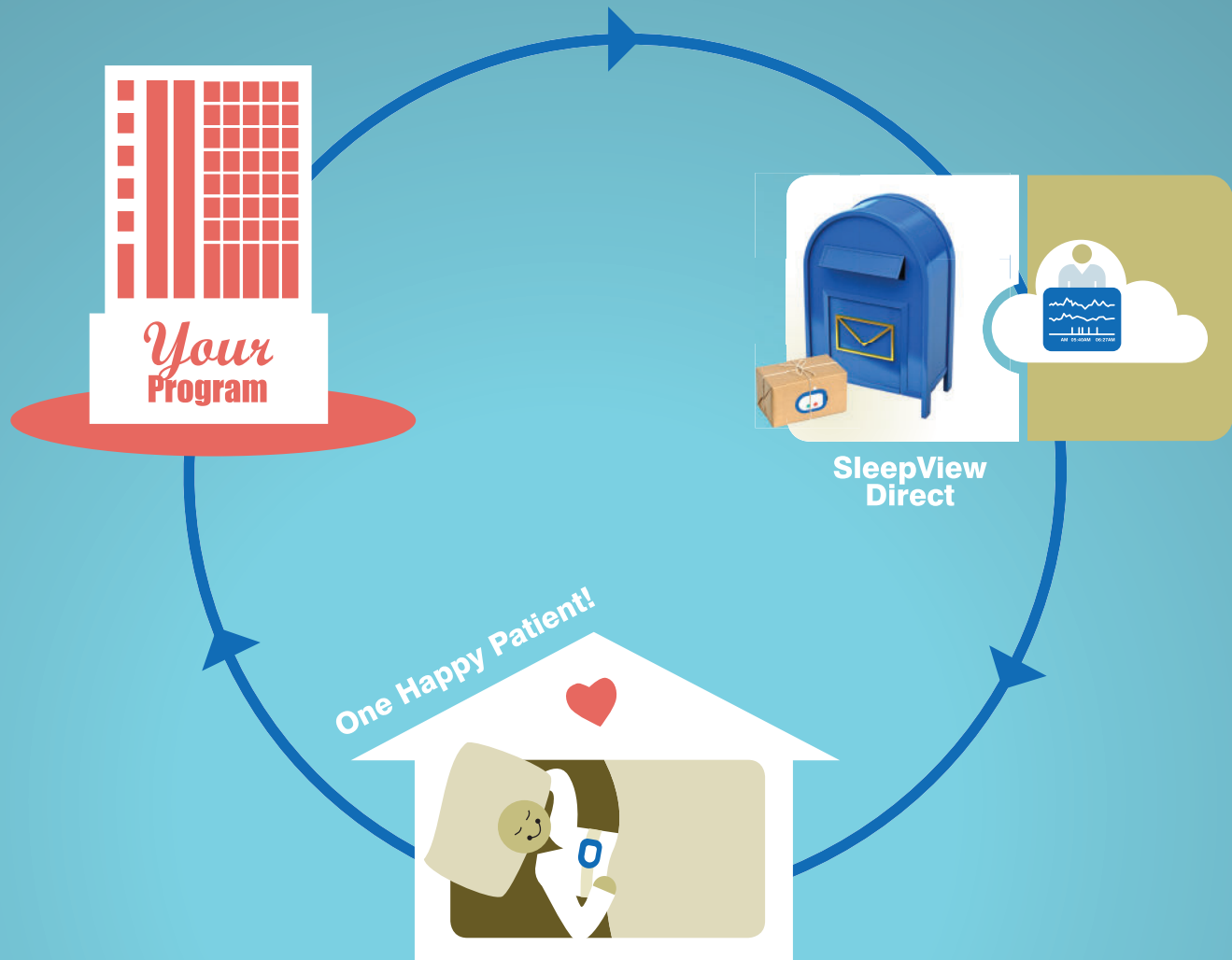


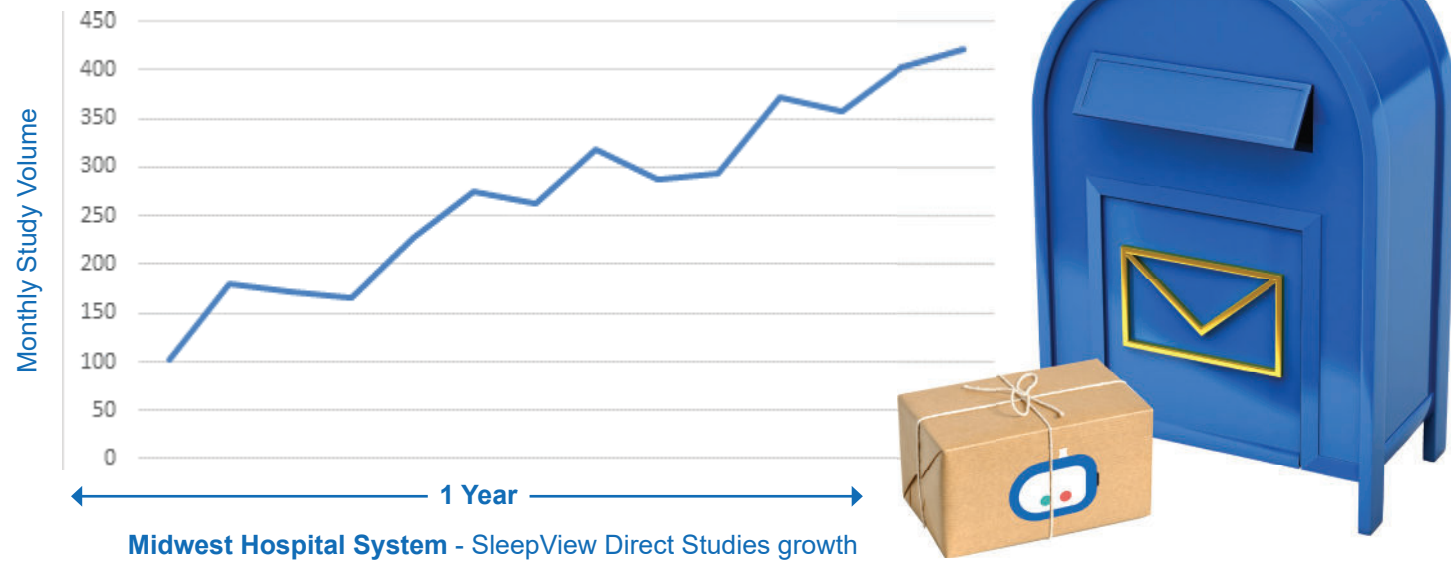
# HSAT Fulfillment Service Designed Specifically for Sleep Centers



Expanding the reach of your sleep services today and tomorrow  
1.877.CleveMed | 1.877.253.8363 | www.ClevedmedSleepview.com

**CleveMed**  
Cleveland Medical Devices Inc.

# 4X STUDY GROWTH



## BENEFITS OF SLEEPVIEW<sup>SM</sup> DIRECT

- Customizable Kit Prep
- Small & Light weight
- Shipping & Handling
- Patient Support
- Customizable Reports
- Manual Scoring

*Sleep specialists are now able to not only better compete in their own markets but expand their reach like never before.*

**Dr. Tim Kowalski**  
CleveMed Medical Director

- Add Direct-Ship service to your existing programs quickly and without capital expenses.
- Free up time from your staff to score and interpret more HSAT studies.
- Prevent business leakage to competitors with Direct-Ship programs.
- Increase revenue by freeing up staff to process more orders.
- Conduct faster and more convenient testing by keeping patients at home.
- Maintain continuity of care.

## SLEEPVIEW<sup>SM</sup> DIRECT WORKFLOW

- Healthcare provider determines HST patient eligibility. If eligible, provider describes the home test to the patient and sends fulfillment order to CleveMed.
- CleveMed schedules test with patient, describes sensor placement on phone, and mails a SleepView Direct kit to the patient's home. The patient can call CleveMed's support phone number for assistance 24/7.
- After a good study is completed, the patient mails the SleepView Direct kit to CleveMed for data download. CleveMed reviews recordings to ensure a good study is available. Email notification is sent to sleep center's specialists when the study is available for scoring and interpretation (manual scoring by CleveMed's RPSGT's is available). Co-branding and workflow customization for large volume organizations is available.
- Your sleep specialists score and interpret the studies.

Bundled study pricing includes:	SleepView Monitor	Web Portal	Disposable Accessories	Shipping & Handling	Patient Phone Support	Manual Scoring by RPSGT
Gold	✓	✓	✓	✓	✓	✓
Silver	✓	✓	✓	✓	✓	

\*\* SleepView Direct is available throughout the United States and US territories. Additional fees may apply for mailing to US territories.

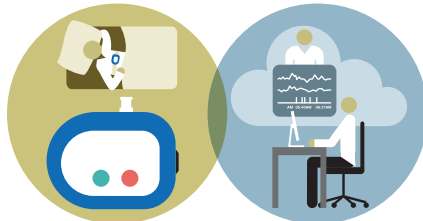
# SLEEPVIEW MONITOR SPECIFICATIONS

Sleep Device Type	Type III
Channel Count	8
Dimensions	3" x 2.6" x 0.7"
Weight	2 oz.
Power	1 AAA battery (powers 1 sleep study)
Memory	1 GB internal memory (multiple-night recording)

- 8 channels
- Heart rate
  - Pulse oximetry
  - Respiratory airflow (compatible with CPAP)
  - RIP respiratory effort belt
  - Snore
  - Body position
  - Auxiliary (Second RIP respiratory effort, Thermal airflow, or IDcheck™)
  - Integrated actigraphy (Total sleep time)



SleepView® Monitor    SleepView™ Portal



## SleepView® Direct Kit Contents


- SleepView® Monitor
- AAA Alkaline Battery
- Nasal Cannula
- ReadyRIP™ Effort Belt
- Pulse Oximetry Sensor
- Adhesive to hold sensors
- Patient Instructions
- Patient Questionnaires

## Minimum System Requirements for Web Portal Software

- Microsoft® Windows® 8.1, 10, or newer
- 2.4 GHz processor
- 1 GB of RAM
- 2 GB available hard disk space
- USB port
- Google Chrome™ (See Web Portal for the complete list of supported web browsers)

Caution: Federal law restricts this device to sale by or on the order of a healthcare provider only. Windows, and Microsoft are registered trademarks of Microsoft Corporation. Chrome is a trademark of Google LLC.

Crystal PSG™, ReadyRIP™, and IDcheck™ are trademarks of Cleveland Medical Devices Inc. SleepView® is manufactured by and a registered trademark of Cleveland Medical Devices Inc. SleepView™ Direct is a service mark of Cleveland Medical Devices Inc.

 SleepView® is made in the U.S.A with patient phone support based in the U.S.A

Expanding the reach of your sleep services today and tomorrow  
 1.877.CleveMed | 1.877.253.8363 | [www.ClevemedSleepview.com](http://www.ClevemedSleepview.com)

**CleveMed**  
 Cleveland Medical Devices Inc.